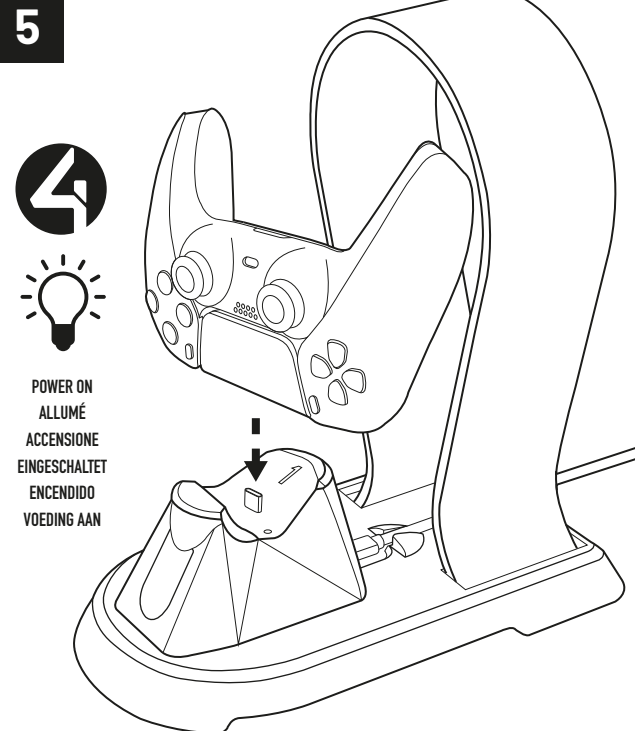
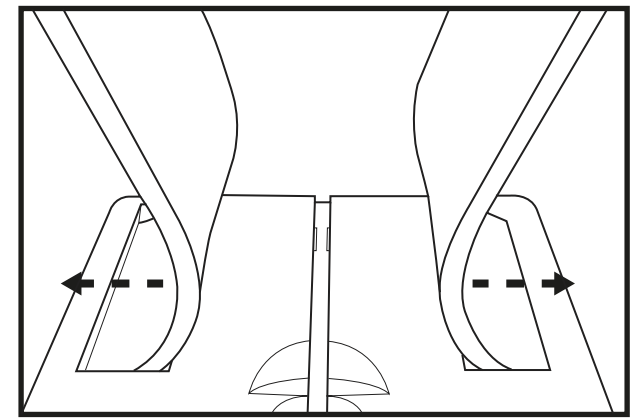
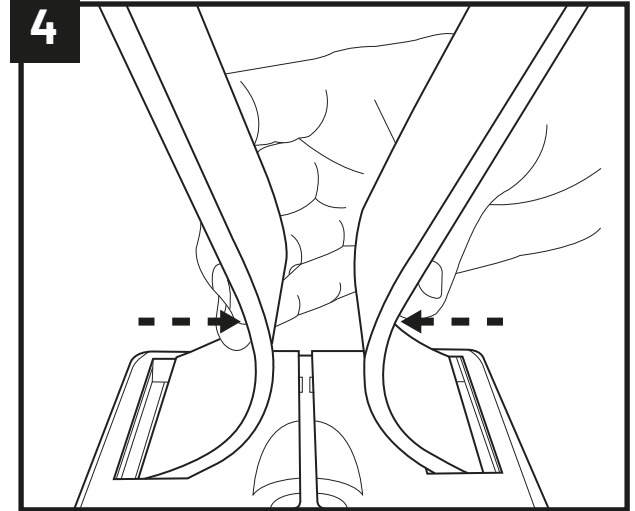
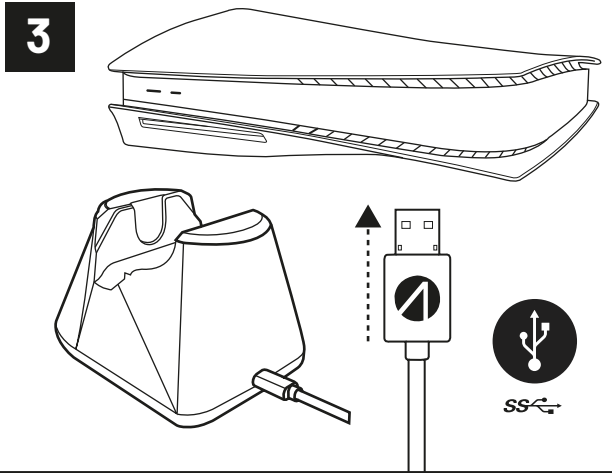
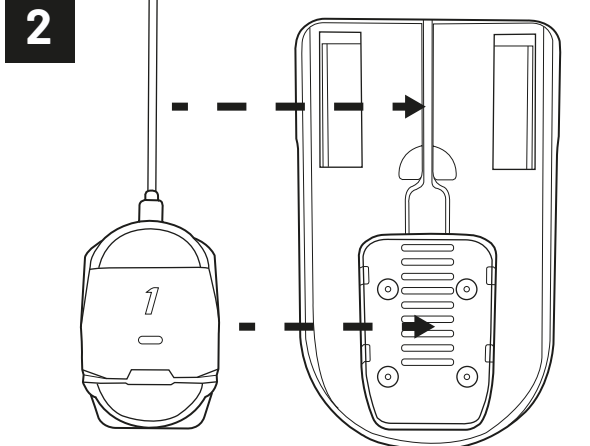
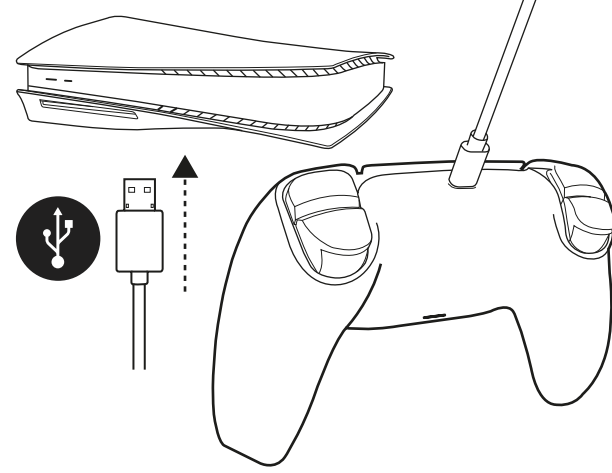


PLAY & CHARGE



UK: CHARGING LED INDICATORS
 SOLID RED LED - CHARGING
 SOLID BLUE LED - FULLY CHARGED

FR: VOYANT LUMINEUX DE CHARGE
 VOYANT ROUGE FIXE - EN CHARGE
 VOYANT BLEU FIXE - CHARGÉ

IT: SPIE LED DI RICARICA
 LED ROSSO FISSO: CARICA IN CORSO
 LED BLU FISSO: CARICA COMPLETATA

DE: DIE LED-LADEANZEIGEN
 KONSTANTES ROTES LED - LADEVORGANG LÄUFT
 KONSTANTES BLAUES LED - VOLLSTÄNDIG AUFGELADEN

ES: INDICADORES LED DE CARGA
 LED ROJO FIJO: EN ESTADO DE CARGA
 LED AZUL FIJO: COMPLETAMENTE CARGADO

NL: LAADSTATUSINDICATOREN
 ONONDERBROKEN RODE LED - AAN HET OPLADEN
 ONONDERBROKEN BLAUWE LED - VOLLEDIG OPGELADEN

Legal information
 Please keep this instruction manual for future reference. If you require any help or assistance please contact help@abptech.co.uk or visit 4gamers.net

Warranty
 This product is guaranteed for a period of one year from the date of purchase. During this period if there is a defect due to faulty materials, or workmanship the retailer from whom you purchased it will replace it with the same or a similar model on production of your purchase receipt or proof of purchase. This guarantee does not cover defects arising from accidental damage, misuse or wear and tear, and is available only to the original purchaser of the product. This does not affect your statutory rights.

- Important Safeguards & Precautions**
- Children should always be supervised when using this product
 - This unit is for indoor use only, do not expose to dust, direct sunlight, wet weather conditions, high humidity, high temperatures or mechanical shock
 - Do not expose to splashing, dripping, rain or moisture. Do not immerse in liquid
 - Do not position any cables where they would be subjected to extreme heat or flames
 - Keep all cables away from oil or sharp objects
 - Avoid any unnecessary strain of cables
 - Never carry the unit by its cables
 - Do not use if the equipment is damaged
 - Damaged Power Supplies must be discarded and replaced
 - To reduce the risk of fire, electric shock or personal injury, do not use the USB Premium Braided Play & Charge Cable supplied with any other attachment, unit or equipment
 - Do not attempt to use the equipment with any mains adapter that has a USB attachment built in
 - The charging terminals are not to be short-circuited
 - Do not disassemble; there are no serviceable parts inside
 - For external cleaning, use a soft, clean, damp cloth only. Use of detergents may damage the cabinet finish and leak inside

Not recommended for children under 6 years of age. **MADE IN CHINA**

Federal Communication Commission Class B Interference Statement

This device complies with part 15 of the FCC Rules. Operation is subject to the following two conditions: (1) this device may not cause harmful interference, and (2) this device must accept any interference received, including interference that may cause undesired operation.

This equipment has been tested and found to comply with the limits for a Class B digital device, pursuant to part 15 of the FCC Rules. These limits are designed to provide reasonable protection against harmful interference in a residential installation. This equipment generates, uses, and can radiate radio frequency energy and, if not installed and used in accordance with the Instructions, may cause harmful interference to radio communications. However, there is no guarantee that interference will not occur in a particular installation.

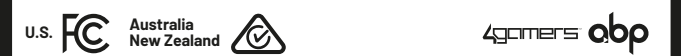
If this equipment does cause harmful interference to radio or television reception, which can be determined by turning the equipment off and on, the user is encouraged to try to correct the interference by one or more of the following measures:

- Reorient or relocate the receiving antenna.
- Increase the separation between the equipment and receiver.
- Connect the equipment to an outlet on a circuit different from that to which the receiver is connected.
- Consult the dealer or an experienced radio/TV technician for help.

Canadian ICES Statements
Canadian Department of Communications Radio Interference Regulations

This digital apparatus does not exceed the Class B limits for radio-noise emissions from a digital apparatus as set out in the Radio Interference Regulations of the Canadian Department of Communications. This Class B digital apparatus complies with Canadian ICES-003.

Règlement sur le brouillage radioélectrique du ministère des Communications
 Cet appareil numérique respecte les limites de bruits radioélectriques visant les appareils numériques de classe B prescrites dans le Règlement sur le brouillage radioélectrique du ministère des Communications du Canada. Cet appareil numérique de la Classe B est conforme à la norme NMB-003 du Canada.



**HAVING TROUBLE SETTING UP?
 WE CAN HELP!**
**TECHNICAL SUPPORT
 QUESTIONS / SET-UP / NOT WORKING?**

ONLINE: 4GAMERS.NET
 Set-Up Guides, Support Articles, FAQs and more

EMAIL: HELP@ABPTECH.CO.UK
 How can we help? Our support team will answer your questions

LIVE CHAT:
 Speak to our Support Team by clicking the 'Chat With Us' box over at 4gamers.net

OPERATING TIMES:
 Monday - Thursday 9am to 5pm
 Friday 9am to 4pm
 (UK Times - GMT)



**HAPPY WITH YOUR PRODUCT?
 DON'T FORGET TO LEAVE A REVIEW ON THE RETAILER
 WEBSITE OR OUR FACEBOOK PAGE.**

PLEASE FOLLOW US AT...
 @4GamersNet

