

**SET-UP & LEGAL INFORMATION**  
Please keep this instruction manual for future reference. If you require any help or assistance please contact [help@abptech.co.uk](mailto:help@abptech.co.uk) or visit [4gamers.net](http://4gamers.net)

**KIT INCLUDES:**  
• Premium Travel Case  
• Gaming Headset  
• 2m Premium Braided Play & Charge Cable  
• Foam Adapter for Nintendo Switch™ Lite

**WARRANTY**  
This product is guaranteed for a period of one year from the date of purchase. During this period if there is a defect due to faulty materials, or workmanship the retailer from whom you purchased it will replace it with the same or a similar model on production of your purchase receipt or proof of purchase. This guarantee does not cover defects arising from accidental damage, misuse or wear and tear, and is available only to the original purchaser of the product. This does not affect your statutory rights.

**INSTALLATION AND USE - PREMIUM BRAIDED PLAY & CHARGE CABLE**  
1: Using the USB Premium Braided Play & Charge Cable, insert the smaller end into your Nintendo Switch™ and the other end into any free USB port. Alternatively, you can also plug into the USB port on the back of your Nintendo Switch™ Dock  
2: Switch on your device. Your chosen device will now begin charging

**NOTE:** Refer to your Nintendo Switch™ System for further information on charging times.

**GAMING HEADSET INSTALLATION**  
Insert the 3.5mm jack plug into your Nintendo Switch™ console. The headset should work upon connection.

**PRECAUTIONS**  
• Ensure that the volume control is set to the minimum level before connecting the earphones to your system  
• Before wearing the headset, set the volume control to its minimum level then slowly increase until you reach your desired volume level  
• Listening to your earphones at its maximum level may cause damage to both the headset and your ears  
• Long term exposure to loud music or other sounds in a headset may cause hearing damage. It is best to avoid very high volume levels when using a headset, especially for extended periods

**IMPORTANT SAFEGUARDS & PRECAUTIONS**  
• Children should always be supervised when using this product  
• This unit is for indoor use only, do not expose to dust, direct sunlight, wet weather conditions, high humidity, high temperatures or mechanical shock  
• Do not expose to splashing, dripping, rain or moisture. Do not immerse in liquid  
• Do not position the cable where it would be subjected to extreme heat or flames  
• Keep cables away from oil or sharp objects  
• Avoid any unnecessary strain of cables  
• Never carry the console by the USB cable  
• Do not disassemble; there are no serviceable parts inside  
• For external cleaning, use a soft, clean, damp cloth only. Use of detergents may damage the cabinet finish and leak inside

Not recommended for children under 6 years of age. **MADE IN CHINA**

**Federal Communication Commission Class B Interference Statement**

This device complies with part 15 of the FCC Rules. Operation is subject to the following two conditions: (1) this device may not cause harmful interference, and (2) this device must accept any interference received, including interference that may cause undesired operation.

This equipment has been tested and found to comply with the limits for a Class B digital device, pursuant to part 15 of the FCC Rules. These limits are designed to provide reasonable protection against harmful interference in a residential installation. This equipment generates, uses, and can radiate radio frequency energy and, if not installed and used in accordance with the instructions, may cause harmful interference to radio communications. However, there is no guarantee that interference will not occur in a particular installation.

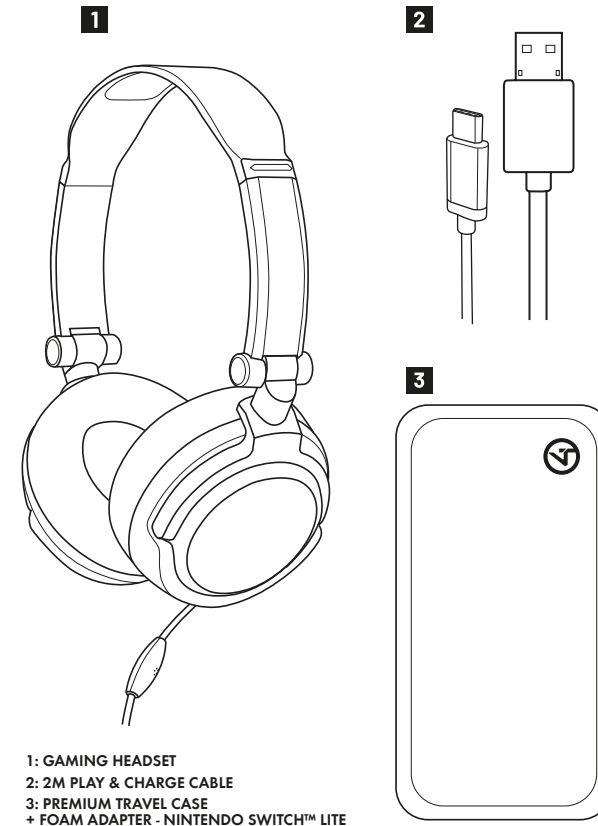
If this equipment does cause harmful interference to radio or television reception, which can be determined by turning the equipment off and on, the user is encouraged to try to correct the interference by one or more of the following measures:

- Reorient or relocate the receiving antenna.
- Increase the separation between the equipment and receiver.
- Connect the equipment to an outlet on a circuit different from that to which the receiver is connected.
- Consult the dealer or an experienced radio/TV technician for help.

**Canadian ICES Statements**  
**Canadian Department of Communications Radio Interference Regulations**  
This digital apparatus does not exceed the Class B limits for radio-noise emissions from a digital apparatus as set out in the Radio Interference Regulations of the Canadian Department of Communications. This Class B digital apparatus complies with Canadian ICES-003.

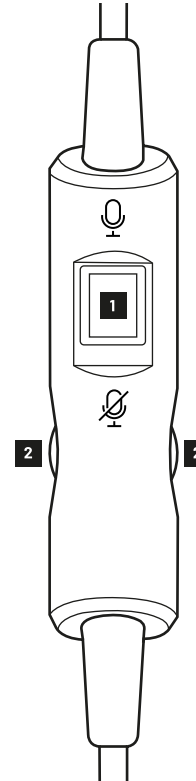
**Règlement sur le brouillage radioélectrique du ministère des Communications**  
Cet appareil numérique respecte les limites de bruits radioélectriques visant les appareils numériques de classe B prescrites dans le Règlement sur le brouillage radioélectrique du ministère des Communications du Canada. Cet appareil numérique de la Classe B est conforme à la norme NMB-003 du Canada.

## PACKAGE CONTENTS CONTENU DE LA BOÎTE



- 1: GAMING HEADSET
- 2: 2M PLAY & CHARGE CABLE
- 3: PREMIUM TRAVEL CASE  
+ FOAM ADAPTER - NINTENDO SWITCH™ LITE

## HEADSET CONTROLS LES CONTRÔLES



### 1: MICROPHONE SWITCH

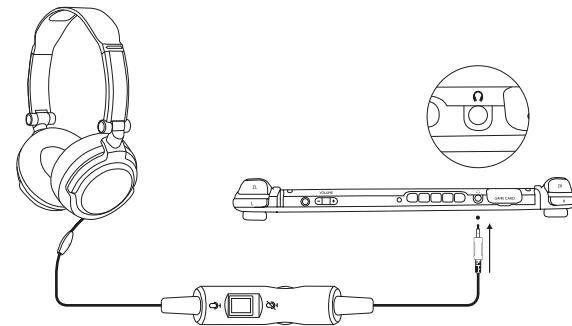
MICROPHONE IS ACTIVE/ON

MICROPHONE IS MUTED

### 2: MASTER VOLUME - GAME & CHAT

**NOTE: PLEASE MAKE SURE THE VOLUME IS TURNED UP AND THE MIC IS SWITCHED ON**

## HEADSET SETUP CONFIGURATION POUR NINTENDO SWITCH



**EN:**  
Insert the headsets 3.5mm jack plug into your Nintendo Switch™ Console. The Headset should work upon connection . Chat available for games that support chat.

**FR:**  
Branchez la prise Jack de 3,5 mm du casque sur la console Nintendo Switch™.

**DE:**  
Verbinden Sie den 3,5-mm-Klinkenanschluss des Headsets mit der Nintendo Switch-Konsole.

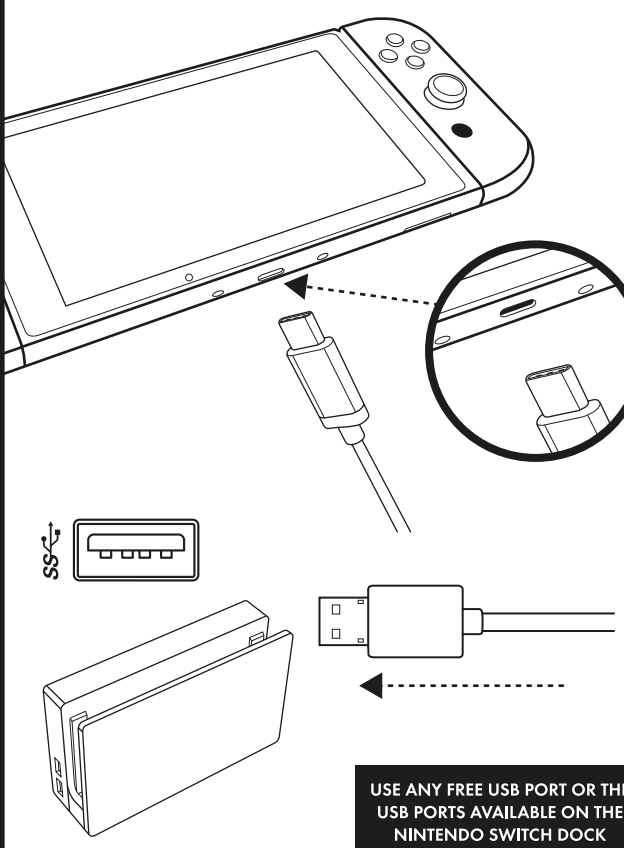
**IT:**  
Branchez la prise Jack de 3,5 mm du casque sur la console Nintendo Switch™.

**ES:**  
Benchufe la clavija de conexión de 3,5 mm del casco a la consola Nintendo Switch™.

**NL:**  
Sluit de aansluiting van 3,5 mm van de headset aan op de Nintendo Switch™-console

**PT:**  
Inserir o conector de 3,5 mm dos auscultadores na consola da sua nintendo switch™.

## PLAY & CHARGE SETUP CONFIGURATION PLAY ET CHARGE



**USE ANY FREE USB PORT OR THE USB PORTS AVAILABLE ON THE NINTENDO SWITCH DOCK**

## HAVING TROUBLE SETTING UP? WE CAN HELP!

### TECHNICAL SUPPORT QUESTIONS / SET-UP / NOT WORKING?

**ONLINE: 4GAMERS.NET**  
Set-Up Guides, Support Articles, FAQ's and more

**EMAIL: HELP@ABPTECH.CO.UK**  
How can we help? Our support team will answer your questions

**LIVE CHAT:**  
Speak to our Support Team by clicking the 'Chat With Us' box over at [4gamers.net](http://4gamers.net)

**OPERATING TIMES:**  
Monday - Thursday 9am to 5pm  
Friday 9am to 4pm  
(UK Times - GMT)

**FR: ONL D'EXPRESSION ANGLAISE**  
**IT: ONL ANGLOFONO**  
**DE: ENGLISCH SPRECHENDES ONL**  
**ES: ONL DE HABLA INGLESA**  
**PT: ATENDIMENTO APENAS EM INGLÊS**



**HAPPY WITH YOUR PRODUCT?  
DON'T FORGET TO LEAVE A REVIEW ON THE RETAILER  
WEBSITE OR OUR FACEBOOK PAGE.**

**PLEASE FOLLOW US AT...**



## QUICK START GUIDE GUIDE DE DÉMARRAGE RAPIDE



Not recommended for children under 6 years of age. Please retain this packaging for future reference. Due to the company's policy of constant improvement and technical refinement, the company reserve the right to alter the specification. This product is not sponsored, endorsed or approved by Nintendo. Nintendo Switch™ is a registered trademark of Nintendo Co. Ltd. 4GAMERS™ is a registered trademark of Accessories 4 Technology Ltd. All rights reserved. Manufactured Under Licence By ABP Technology Ltd.

